

Technical amendments are reserved. Specifications here are subject to change with or without prior notice.

Marketing

Room#1203, WoolimLion's Valley2,
2 Gasan digital 1-ro, Geumcheon-gu Seoul, Korea
Tel +82-2-801-0833 Fax +82-2-801-0899
Email concretepump@everdigm.com

Head office & Factory

49, Buyeong-gil, Jincheon-eup, jincheon-gun,
Chungcheongbuk-do, Korea
Tel +82-43-753-3518 Fax +82-43-753-3540



EPB Catalog

EPB GENERAL CATALOG

EPB32Z

EPB36R

Concrete Placing Boom



Quality, Satisfaction and
Professionalism

With a history of challenging ourselves to be the best,
we will build new competitiveness for the future by
brand innovation through quality.

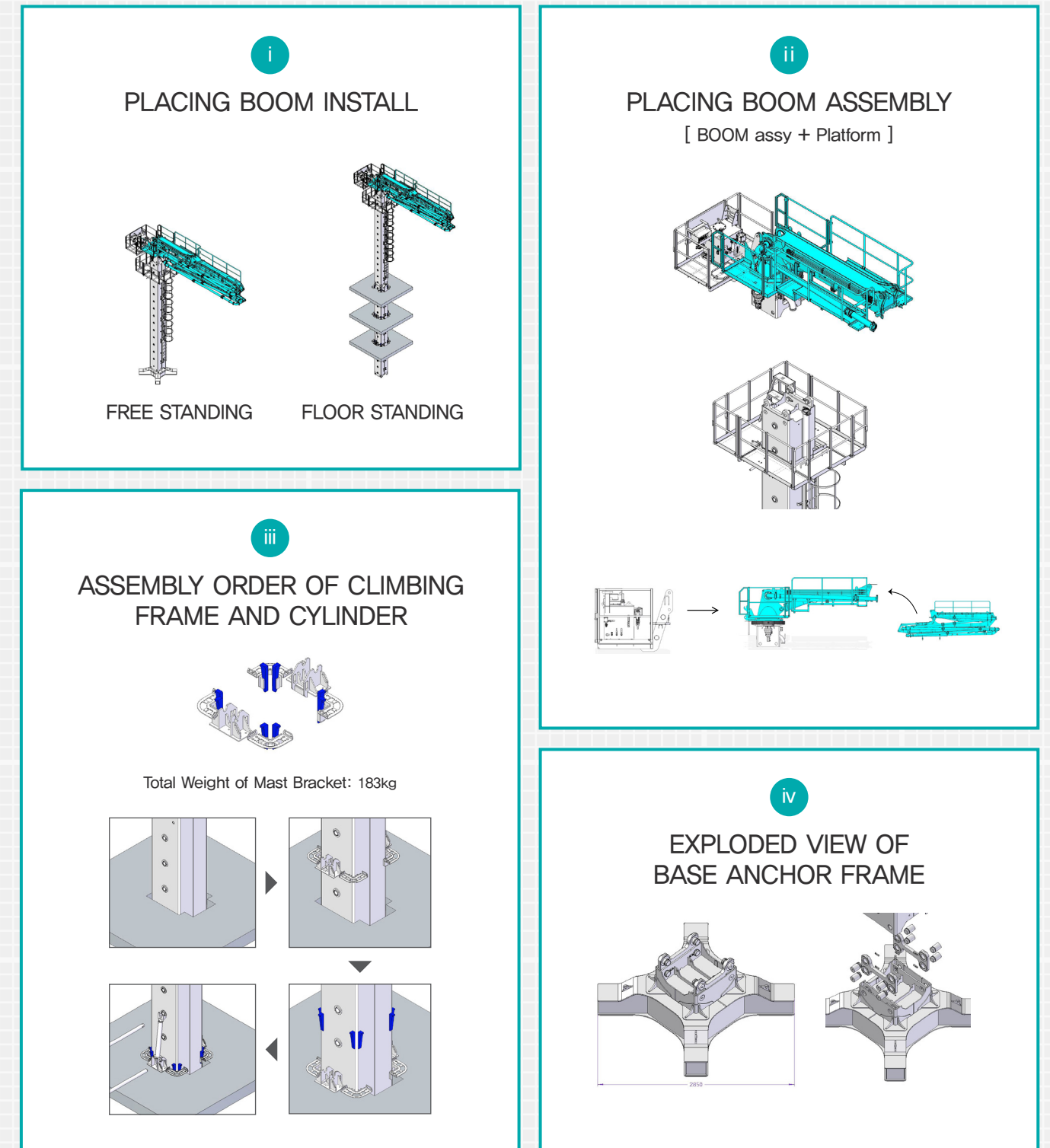


Based on a strict safety structure design, Hyundai Everdigm allows convenient and safe work to be done in any work environment. Furthermore, Hyundai Everdigm has utilized the Free Flow Hydraulic (FFH) system, which has proven performance in the world market, to maximize work efficiency, achieve superior serviceability and minimal wear, and take equipment quality to the next level.

20M to 70M Boom Pump, Line Pump, Trailer Pump, Placing Boom!

Hyundai Everdigm will be the best successful business partner on the construction site.

Basic Information

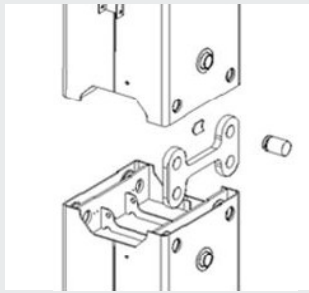


EPB Features

01

850 MAST

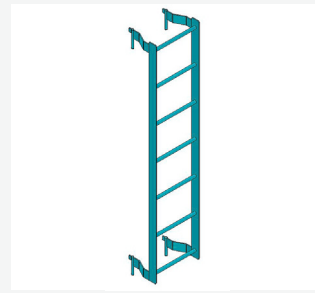
PIN ASSEMBLY TYPE
EASY TO ASSEMBLE
AND DISASSEMBLE



02

LADDER

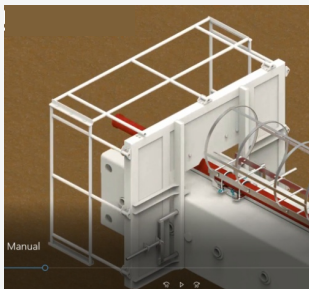
STATIONARY TYPE
EASY TO ASSEMBLE
AND DISASSEMBLE



03

LOWER PLATFORM

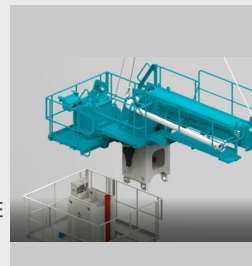
ASSEMBLY TYPE
EASY TO ASSEMBLE AND
DISASSEMBLE



04

UPPER PLATFORM

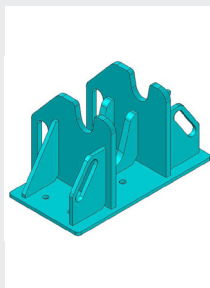
WITH HANGING UPPER AND PIN TYPE
LOWER ASSEMBLIES
EASY TO ASSEMBLE AND DISASSEMBLE
ENSURING SAFETY AND BETTER
SERVICEABILITY



05

CLIMBING CYLINDER BKT

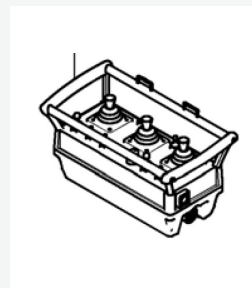
REDUCE WEIGHT AND DISTRIBUTE LOAD
CONCENTRATED AT THE END OF THE SLAB
TO PREVENT DAMAGE TO THE SLAB



06

CLIMBING OPERATION BY WIRELESS REMOTE CONTROLLER

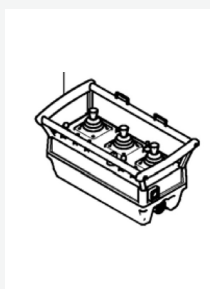
INCREASED EASE OF
OPERATION



07

APPLICATION OF WINTER WARM-UP SYSTEM BY WIRELESS REMOTE CONTROLLER

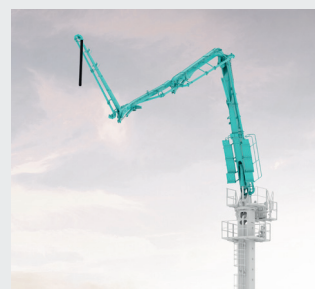
ENABLED TO WARM UP IN WINTER



08

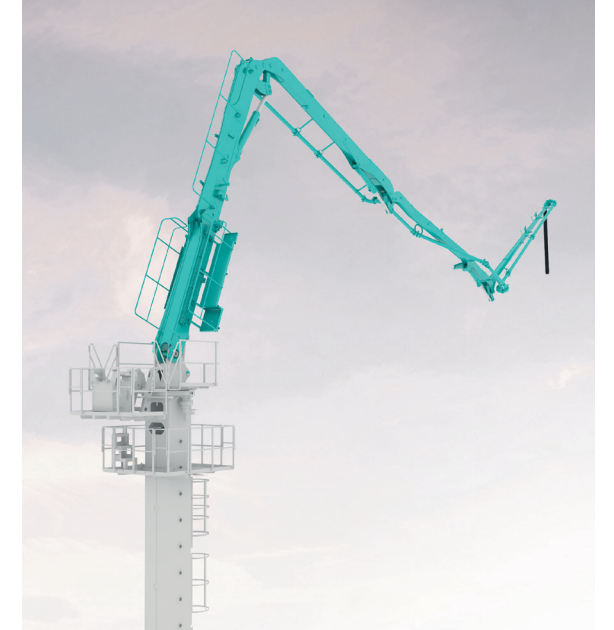
OPTIMIZED FREE STANDING

32Z – 20M
36R – 16M



Differentiated Hyundai Everdigm Services

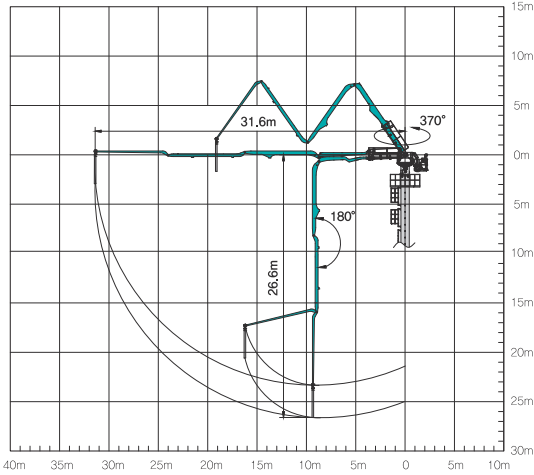
Hyundai Everdigm provides a higher level of customer satisfaction through product quality and accurate and prompt services in the face of accelerating market competition and by introducing a high-level sales management.



EPB 32Z

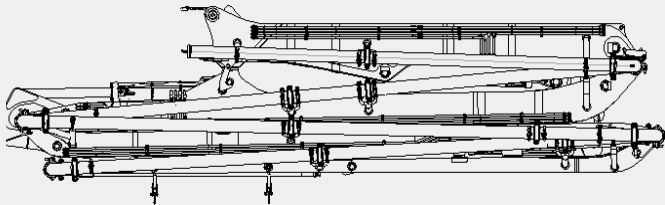
Specifications

EPB32Z

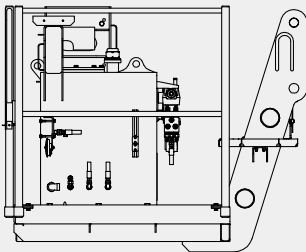


| Item | | Unit | EPB 32Z | Remarks |
|-----------------------|-------------|-------|----------------------------|---|
| Boom type | | — | 4 – Z Boom | Ring Gear |
| Max. horizontal reach | | m | 31,6 | |
| Max. depth reach | | m | 26,6 | Including End Hose |
| End hose length | | m | 3 | |
| Boom length | 1st section | mm | 8,750 | |
| | 2nd section | mm | 7,500 | |
| | 3rd section | mm | 7,400 | |
| | 4th section | mm | 7,400 | |
| Boom angle | 1st section | ° | 90 | |
| | 2nd section | ° | 180 | |
| | 3rd section | ° | 245 | |
| | 4th section | ° | 250 | |
| Specification | | | | |
| Mast specification | | m | 20 (10m*2ea) | 850 Mast + Pin Assembly Type |
| Pipeline diameter | | mm | 125 | |
| Boom rotating speed | | rpm | 0,5 | |
| Slewing angle | | ° | 370 | |
| Max. power output | | kW | 15 | |
| Concrete output | | m³/hr | 15 – 150 | |
| Power supply | | V/Hz | AC380V 60HZ | |
| Control mode | Optional | — | Wired remote controller | |
| | Standard | — | Wireless remote controller | |
| Weight | | | | |
| Boom weight | | Kg | 4,200 | |
| Pedestal + 1st Boom | | Kg | 5,200 | ~4.1ton(Pedestal + 1st Boom) +1.1ton(Platform + Hydraulic Oil Tank) |

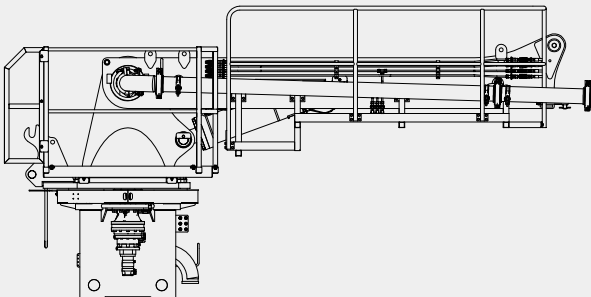
2nd ~ 4th Section Boom Weight: 4.2 ton



Platform Weight : 1.1 ton



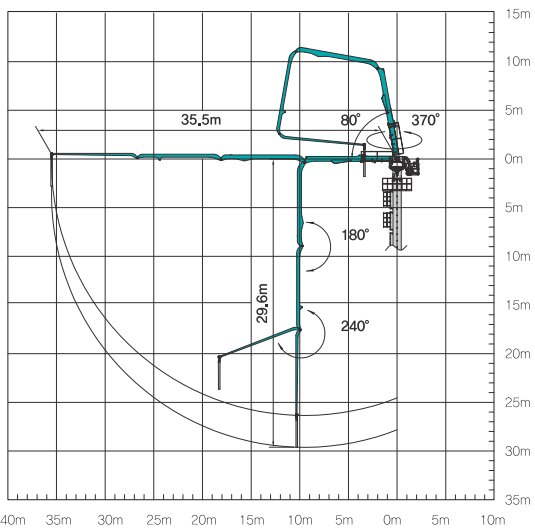
Pedestal & 1ST Boom Weight: : 4.1ton



EPB 36R

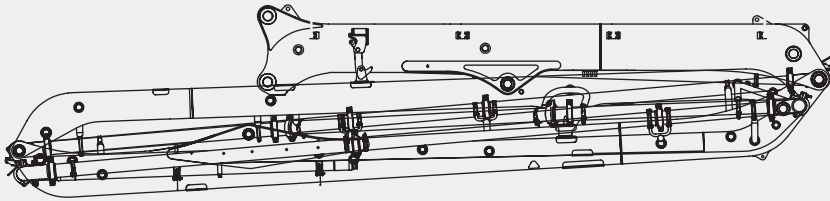
Specifications

EPB36R

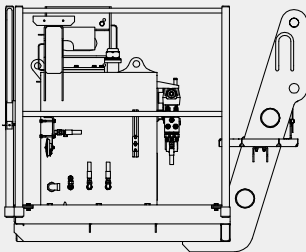


| Item | | Unit | EPB36R | Remarks |
|-----------------------|-------------|-------|----------------------------|---|
| Boom type | | — | 4– R Boom | Ring Gear |
| Max. horizontal reach | | m | 35,5 | |
| Max. depth reach | | m | 29,6 | Including End Hose |
| End hose length | | m | 3 | |
| Boom length | 1st section | mm | 10,000 | |
| | 2nd section | mm | 8,500 | |
| | 3rd section | mm | 8,500 | |
| | 4th section | mm | 8,500 | |
| Boom angle | 1st section | ° | 90 | |
| | 2nd section | ° | 180 | |
| | 3rd section | ° | 180 | |
| | 4th section | ° | 245 | |
| Specification | | | | |
| Mast specification | | m | 20 | 850 Mast + Pin Assembly Type |
| Pipeline diameter | | mm | 125 | |
| Boom rotating speed | | rpm | 0,4 | |
| Slewing angle | | ° | 370 | |
| Max. power output | | kW | 18,5 | |
| Concrete output | | m³/hr | 15 – 150 | |
| Power supply | | V/Hz | AC380V 60HZ | |
| Control mode | Optional | — | Wired remote controller | |
| | Standard | — | Wireless remote controller | |
| Weight | | | | |
| Boom weight | | Kg | 4,700 | |
| Pedestal + 1st Boom | | Kg | 5,300 | ~4.2ton(Pedestal + 1st Boom) +1.1ton(Platform + Hydraulic Oil Tank) |

2nd ~ 4th Section Boom Weight: 4.7 ton



Platform Weight : 1.1 ton



Pedestal & 1ST Boom Weight: : 4.2ton

