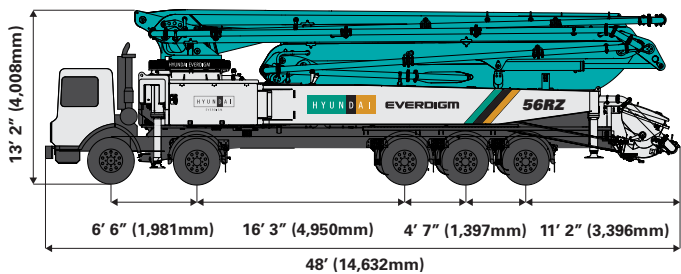


CP56RZ5

Total weight 95,540 lbs (43,336kg)



Dimensions will vary with different truck makes, models and specifications.
Weights are approximate and include pump, boom, truck, driver and some fuel. Varies with options selected.

BOOM

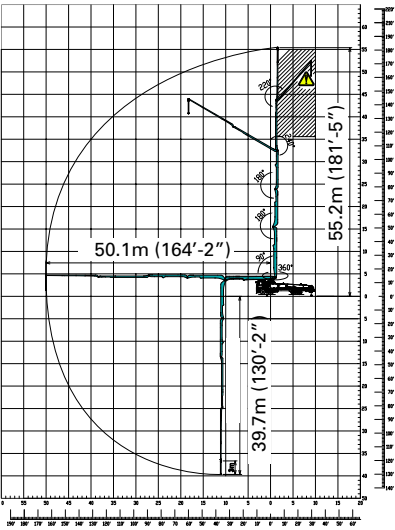
Folding type	5-section RZ-folding
Max. vertical reach	181'1" (55.2m)
Max. horizontal reach	164'3" (50.1m)
Max. depth reach	130'2" (39.7m)
Unfolding height	32'8" (10m)
Slewing angle	360deg.
End hose length	10' (3m)
Delivery pipe dia.	5" (125mm)

PUMP

*refer to P.3 for 2120 pump cell

Pump cell (*option)	2118 (*2120)
Control system	Closed Free Flow Hydraulic
Main pump	A4VG180x2
Concrete cylinder	9"x 83" (230 x 2,100mm)
Strokes No.(per min.)	35
Concrete output	235yd ³ /hr (180m ³ /h)
Concrete pressure	1,233psi (85bar)
Transfer tube type	S-Tube,S2318 (Dia. 230-180mm)
Volume of hopper	158gal (600L)

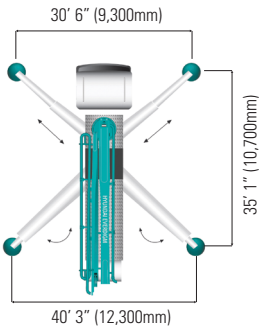
WORKING RANGE



⚠ Don't work in caution area

UNIT:m(ft·in)

OUTRIGGER SPREAD



Front outrigger type X(Diagonal) Extension
Rear outrigger type Swing-out

